



2ND EMES INTERNATIONAL PHD SUMMER SCHOOL

The three SE Pillars:
Social Entrepreneurship
Social Economy
Solidarity Economy

1 July–4 July 2010
Roskilde University
Denmark



PROGRAM

2ND EMES INTERNATIONAL PHD SUMMER SCHOOL

THURSDAY, 1 JULY 2010

- 14:30–15:00 **GREETING OF PARTICIPANTS**
- 15:00–15:15 **OFFICIAL WELCOMING**
IB POULSEN, CHANCELLOR, ROSKILDE UNIVERSITY
LINDA ANDERSEN, DIRECTOR OF THE CENTRE FOR SOCIAL ENTREPRENEURSHIP
JEAN-LOUIS LAVILLE, MEMBER OF THE EMES BOARD OF DIRECTORS
- 15:15–16:15 **PLENARY CONFERENCE (I)**
CHANGING CONFIGURATIONS: SOCIAL ENTREPRENEURSHIP, SOCIAL ENTERPRISE, SOCIAL AND SOLIDARITY ECONOMY
LARS HULGÅRD, PRESIDENT OF THE CENTRE FOR SOCIAL ENTREPRENEURSHIP AND PRESIDENT OF EMES
- RESPONDENT: **JEAN-LOUIS LAVILLE**, EUROPEAN COORDINATOR OF THE KARL POLANYI INSTITUTE FOR POLITICAL ECONOMY (CANADA), PROFESSOR AT CNAM (FRANCE)
- GENERAL DEBATE**
- 16:15–16:45 **PRESENTATION OF THE DYNAMICS OF THE SUMMER SCHOOL: PROGRAM, METHODOLOGY, AND WORKING GROUPS**
ROCÍO NOGALES, EMES DIRECTOR OF COORDINATION
- 16:45–17:45 **METHODOLOGICAL WORKSHOP (I)**
SURVIVING YOUR PHD AND ENJOYING IT: STRATEGIES FROM THREE RECENT PHD GRADUATES
BENJAMIN HUYBRECHTS AND **ANDREIA LEMAITRE**
- 17:45–18:15 **COFFEE BREAK**
- 18:15–20:00 **INTRODUCTION ROUND**
PARTICIPATING PHD STUDENTS: RESEARCH SUBJECTS, QUESTIONS AND METHODOLOGY
PARTICIPATING FACULTY MEMBERS
- 20:00–21:00 **BUFFET AT ROSKILDE UNIVERSITY**

FRIDAY, 2 JULY 2010

- 9:30–11:00 **PLENARY CONFERENCE (II.A)**
RECENT DEVELOPMENTS IN SERVICE DELIVERY AND ITS GOVERNANCE
ADALBERT EVERS
- RESPONDENT: **BERNARD ENJOLRAS**
- GENERAL DEBATE**
- 11:00–11:30 **COFFEE BREAK**
- 11:30–13:30 **PARALLEL TRAINING SEMINARS (I)**
PRESENTATION OF STUDENTS' RESEARCH PROJECTS (BREAK UP IN WORKING GROUPS)
- 13:30–15:00 **LUNCH AT ROSKILDE UNIVERSITY**
- 15:00–16:00 **METHODOLOGICAL WORKSHOP (II)**
HOW TO PRODUCE A PUBLISHABLE ARTICLE
BERNARD ENJOLRAS
- 17:00–22:00 **ROSKILDE FESTIVAL**
GUIDED TOUR OF THE "BACKSTAGE" OF THIS SOCIAL ENTERPRISE AND CONCERT
- 9:30–11:00 **PLENARY CONFERENCE (II.B)**
THEORETICAL INTRODUCTION TO MULTISTAKEHOLDER ENTERPRISE
ISABEL VIDAL
- RESPONDENT: **VICTOR PESTOFF**
- GENERAL DEBATE**

SATURDAY, 3 JULY 2010

- 9:30–11:00 **PLENARY CONFERENCE (III.A)**
REGIONAL AND NATIONAL CONTEXTS FOR SOCIAL AND SOLIDARITY ECONOMY DEVELOPMENT: LATIN AMERICA AND EUROPE
JOSÉ LUIS CORAGGIO
LUIZ INÁCIO GAIGER
JEAN-LOUIS LAVILLE
- GENERAL DEBATE**
- 11:00–11:30 **COFFEE BREAK**
- 11:30–13:30 **PARALLEL TRAINING SEMINARS (II)**
PRESENTATION OF STUDENTS' RESEARCH PROJECTS (BREAK UP IN WORKING GROUPS)
- 9:30–11:00 **PLENARY CONFERENCE (III.B)**
SOCIAL ENTERPRISE ACROSS THE WORLD: THE CASES OF SOUTH EAST ASIA, CEE AND THE CIS AND THE US
CARLO BORZAGA
JACQUES DEFOURNY
MARTHE NYSENS
- GENERAL DEBATE**



Cover picture: Lecture Hall, Roskilde University, Denmark

1 JULY–4 JULY 2010, ROSKILDE UNIVERSITY, DENMARK

PROGRAM

CONTINUED

SATURDAY, 3 JULY 2010, CONTINUED

- 13:30–14:30 *LUNCH AT ROSKILDE UNIVERSITY*
- 14:30–16:00 **METHODOLOGICAL WORKSHOP (III)**
RESEARCH DESIGN: FROM THE RESEARCH QUESTION TO THE
EXPLOITATION OF RESULTS
ROGER SPEAR
- 16:00–18:00 **PARALLEL TRAINING SEMINARS (III)**
PRESENTATION OF STUDENTS' RESEARCH PROJECTS
(BREAK UP IN WORKING GROUPS)
- 19:00–22:00 *BUFFET AT ROSKILDE UNIVERSITY*

SUNDAY, 4 JULY 2010

- 9:30–11:00 **METHODOLOGICAL WORKSHOP (IV)**
HOW TO TAKE THE MOST OUT OF QUANTITATIVE AND QUALITATIVE
DATA FOR YOUR RESEARCH
ISABELLE HILLENKAMP
- 11:00–11:30 *COFFEE BREAK*
- 11:30–13:30 **PARALLEL TRAINING SEMINARS (IV)**
PRESENTATION OF STUDENTS' RESEARCH PROJECTS
(BREAK UP IN WORKING GROUPS)
- 13:30–14:30 *LUNCH AT ROSKILDE UNIVERSITY*
- 14:30–15:30 **PLENARY CONFERENCE (IV)**
RECENT TRENDS AND DEVELOPMENT IN SOCIAL ENTERPRISE
THEORETICAL AND EMPIRICAL RESEARCH
ALL FACULTY MEMBERS
- GENERAL DEBATE**
- 15:30–16:15 **EVALUATION OF THE SUMMER SCHOOL**
ROCÍO NOGALES
- CERTIFICATE CEREMONY**
LARS HULGÅRD AND JACQUES DEFOURNY
- 16:15 **END OF THE SUMMER SCHOOL**

FACULTY MEMBERS' BIOS



LINDA LUNDGAARD ANDERSEN, has a MA in social science and geography and a Ph.D. in educational studies. She is the director of the Graduate School of Lifelong Learning and the director of the Centre for Social Entrepreneurship at Roskilde University and has been the principal investigator of more than 15 national research grants. Her research and scholarship includes empirical inquiries and theoretical and conceptual work in education, learning and social innovation in welfare services, democracy and forms of governance in human services, life history and ethnographies of the public sector, voluntary organizations and social enterprises. She is one of the founding members of the *International Research Group in Psycho-Societal Analysis* (IRGPSA), corresponding editor of *Journal of Social Work Practice* and has been the editor and co-editor of several Danish and international books on social entrepreneurship, psycho-societal learning and social innovation. More information at <http://www.ruc.dk/paes/personale/la/lla@ruc.dk>



CARLO BORZAGA is full professor of economic policy at University of Trento (Italy). His specific interests are labour economics, and the economic analysis of nonprofit organizations, focusing on cooperatives in general as well as on social cooperatives, and the evolution of this sector in Europe. He is also concerned with welfare systems and allocation of social services and health-care. From 1997 to 2008 he was the chairman of the Istituto Studi Sviluppo Aziende Nonprofit (IS-SAN), based at Trento University, a research department concentrating on nonprofit organizations and social enterprises. Since 2008 he is the chairman of the European Research Institute on Cooperative and Social Enterprises (Euricse). He has participated in many conferences and seminars both at international and national level and he has served on many scientific committees of journals, institutional and public bodies. He has written and co-edited numerous books and papers on labour economics, social and cooperatives enterprises.
carlo.borzaga@unitn.it



TACO BRANDSEN is Associate Professor at Radboud University Nijmegen, The Netherlands. He received master's degrees in Public Administration and in English Literature from Leiden University and a PhD in Public Administration from Twente University, for which he won the Van Poelje Award for the best dissertation on public administration in The Netherlands. His work has focused on issues of governance, social services and the third sector. He has published numerous articles, book chapters, books and reports, which recently included *Civiness in the Production and Delivery of Social Services* (2010), *Co-Production, the third sector and the delivery of public services* (2007), *Quasi-market governance* (2004) and articles in journals such as *Public Administration*, *Voluntas*, *Social Policy and Administration* and *Public Management Review*.
t.brandsen@fm.ru.nl



JOSÉ LUIS CORAGGIO, Argentinian economist with long work-related stays in Argentina, Mexico, Nicaragua and Ecuador. Former Ex Rector de la of the *Universidad Nacional de General Sarmiento* (UNGS) in Argentina, he is currently the academic director of UNGS Masters in social economy. Founding partner and coordinator of the *Red Latinoamericana de Investigadores en Economía Social y Solidaria* (RILESS, www.riless.org). Coraggio has published over 120 articles and has authored or participated in more than 25 books. Among them, the most recent

FACULTY MEMBERS' BIOS

CONTINUED

ones are: *Economía social, acción pública y política* (Editorial CICCUS, Buenos Aires, 2007); *La Economía Social desde la periferia* (ed., UNGS-Altamira, Buenos Aires, 2008), and *Qué es lo económico* (ed., Ciccus, Buenos Aires, 2009). More information at www.coraggioeconomia.org.

jicoraggio@yahoo.com



JACQUES DEFOURNY is professor of economics at HEC Management School, University of Liege (Belgium) where he is also a director of the Centre for Social Economy (www.ces-ulg.be). Since 1996 and until recently, he has been acting as the founding coordinator and then the president of the EMES European Research Network (2002-2010). He holds a Master in economics (Catholic University of Louvain), a Master of public administration (Cornell University, Ithaca, N.Y.) and a Ph.D. in economics (University of Liege). His work focuses on the emergence of social enterprise in various parts of the world and on conceptual and quantitative analysis of the third sector in developed as well as developing countries. In addition to numerous articles in academic journals, he has authored or (co-)edited ten books among which *The Third Sector. Co-operative, Mutual and Non-profit Organizations* (De Boeck, Brussels, 1992, also published in Spanish and Japanese), *L'économie sociale au Nord et au Sud* (De Boeck, Bruxelles et Paris, 1999), *Tackling Social Exclusion in Europe. The Role of the Social Economy* (Ashgate, 2001, also in French and Spanish) *The Emergence of Social Enterprise* (Routledge, 2001 and 2004, also in Italian, Japanese and Korean), and *The Worldwide Making of the Social Economy: Innovations and Changes* (Acco, Leuven, 2009).

j.defourny@ulg.ac.be



BERNARD ENJOLRAS, Ph.D. in Sociology, Université de Québec à Montréal, Canada (June 2006); Post-doc: Certificate of achievement as Senior Fellow in Policy Studies, The Johns Hopkins University, Baltimore, USA (1995); Ph.D. in Economics, Université de Paris I - Panthéon Sorbonne, Paris, France (1994); Diploma, Institut d'Etudes Politiques, Paris, France (1984); Higher Diploma in Economics (D.E.A), Ecole des Hautes Etudes en Sciences Sociales (EHESS), Paris, France (1982); MA in Economics and Social Administration, Université de Montpellier, France (1981). Enjolras is currently Research Director at the Institute for Social Research (ISF) and Director of the newly formed Norwegian Centre for Research on Civil Society and Voluntary Sector. Enjolras is a Member of the Editorial Board of The Annals of Public and Cooperative Economics, Revista CIRIEC-España and Canadian Telescopes. He is also associated editor and correspondent for La Revue d'Etude, Coopérative et Mutualiste (RECMA) and has refereed articles for among others Voluntas and The Annals of Public and Cooperative Economics. He has recently been appointed as the new editor of Voluntas.

bernard.enjolras@socialresearch.no



ADALBERT EVERS is full Professor for Comparative Health and Social Policy at the Justus Liebig University in Giessen, Germany; he works there in the Institute for Political Sciences at the Department for Social and Cultural Sciences and in the Institute for Household Economy and Consumer Research at the Department for Agrarian Sciences, Ecology and Environmental Management (double membership). His research interests are located in the field of social policy and social services from a political scientist point of view; he has done research, extensively published and spoken on conferences on issues of civil society, the third sector and volunteering as

2ND EMES INTERNATIONAL PHD SUMMER SCHOOL

well as democracy and governance issues in relation to social policy and the social services. Besides a number of commitments on the board of journals and in policy committees he was for five years (2003-2008) speaker of the section for social policy in the German sociological association and since years he is a member of the board of directors of EMES, a European group of academics in third sector research.

adalbert.evers@uni-giessen.de



LUIZ INÁCIO GAIGER, PhD in Sociology (Catholic University of Louvain, Belgium – 1991) has an extended experience with research on social movements and solidarity economy. He has published numerous articles and books on these topics, including *Sentidos e experiências da economia solidária no Brasil* (Gaiger, ed., Porto Alegre: UFRGS, 2004) and the *Dicionário Internacional da Outra Economia* (Gaiger et al., Coimbra: Almedina, 2009). He coordinated the national research project *Characteristics and trends of the solidarity economy in Brazil*, supported by the Interuniversity Network of Studies and Research UNITRABALHO. He was also involved in the coordination of the Solidarity Economy Program of this network as well as in the coordination of the Brazilian Forum on the Solidarity Economy. Since 1999, he is a researcher of the National Counsel of Technological and Scientific Development of Brazil. Full Professor at the Universidade do Vale do Rio dos Sinos (São Leopoldo, RS, Brazil), he coordinates the UNESCO Chair *Work and Solidary Society*, established in June 2002, as well as the Post-Graduate Program in Social Sciences; fone 51 3591-1180; fax 51 3590-8118). He is one of the coordinators, together with José Luis Coraggio (UNGS/Argentina), of the Latin American Network of Researchers on Social and Solidarity Economy (RILESS), and co-editor of the journal *Otra Economía*. He is the director of the Brazilian Society of Sociology.

gaiger@unisinos.br



ISABELLE HILLENKAMP holds a PhD degree in development studies from the Graduate Institute of International and Development Studies in Geneva. She is currently conducting field studies in Bolivia with a postdoctoral grant from the Swiss National Science Foundation. She is affiliated to the faculties are the Unity of Socioeconomics at the University of Geneva and the Postgrado en Ciencias del Desarrollo de la Universidad Mayor de San Andrés CIDES-UMSA (La Paz, Bolivia). Her specializations include popular and solidarity-based economy and her conceptual approach is based on socio-economics.

isabelle.hillenkamp@unige.ch



LARS HULGÅRD is professor of social entrepreneurship at Roskilde University, Denmark. He studied sociology at the University of Copenhagen, where he specialized in Weberian conflict theory. He received his PhD from Roskilde University where he serves two main functions: Chair of the research group Social Innovation and Organizational Learning and Co-Chair of RUCInnovation – a platform for innovative collaboration with organizations and enterprises. In 2005 he was the founder and first international coordinator of the CINEFOGO-Network of Excellence funded by the EU, Sixth Framework Programme. In 2007 he founded the Centre for Social Entrepreneurship based upon a grant from the Danish Parliament (11 mio. DKK) <http://www.ruc.dk/paes/cse/>. He was co-founder of EMES and has been president since January 2010. Before entering the EMES network his area of specialization was the experimental turn in social policy related to the big social development pro-

1 JULY–4 JULY 2010, ROSKILDE UNIVERSITY, DENMARK

FACULTY MEMBERS' BIOS

CONTINUED

grammes and to the role of civil society organizations. He has been visiting scholar at Harvard University in 2004; University of California, Riverside in 1998 and University of Mannheim in 1992. He was a consultant to the Danish Ministry of Social Affairs between 1994 and 1998 and has been President of the Danish Sociological Association and Member of the executive Committee in the Danish National Association on Social Policy. He has published and edited five books and numerous articles on social innovation, experimental social policy and social entrepreneurship. hulg@ruc.dk



BENJAMIN HUYBRECHTS has recently got his PhD in Management at HEC Management School, University of Liege (Belgium). Based at the Centre for Social Economy (HEC Management School) as a research and teaching assistant, he currently is on a post-doctoral research stay at the Skoll Centre for Social Entrepreneurship, Saïd Business School, University of Oxford. His research examines social enterprises from an institutional perspective, looking at issues such as organizational diversity, governance, and partnerships with mainstream businesses, in different countries and fields (Fair Trade, Work Integration, Recycling, etc.). In the context of a new Master program in the management of social enterprises, to be launched in September 2010 at HEC Management School, he will be teaching classes on governance and organizational diversity in social enterprises. Benjamin is a member of several academic networks (EMES, ISTR, Fairness) and he is a founding member of the recently created Belgian Fair Trade Federation. b.huybrechts@ulg.ac.be



MARTHE NYSENS is a socio-economist and professor at the Catholic University of Louvain, Belgium where she is the co-ordinator of a research team on third sector and social policies within the 'Centre Interdisciplinaire de Recherches Travail-Etat-Société' (CIRTES). Her work focuses on conceptual approaches to the third sector, both in developed and developing countries, as well as on the links between third sector organisations and public policies. She teaches non-profit organisations, social policies and development theories. She conducts several research and studies for national, regional and European government units. She was the coordinator of the project "The Socio-Economic Performance of Social Enterprises in the Field of Integration by Work" and is a member of the Board of Directors of EMES. marthe.nyssens@uclouvain.be



JEAN-LOUIS LAVILLE initially graduated in economics, before obtaining his PhD in sociology from the Institut d'études politiques in Paris. He also holds an HDR (Habilitation to conduct researches – Paris X). He is a professor at the Conservatoire national des arts et métiers (CNAM, Paris), head of the Chair of Service Relations and co-director of the Laboratoire interdisciplinaire pour la sociologie économique (LISE UMR 6209), CNAM-CNRS.

He participates in several academic reviews and journals. He is a member of the international scientific board for *Sociologia e politica sociale*, *Éditions FrancoAngeli* (Milan); of the redaction committee of *Sociologia del Lavoro*; of the orientation committee of *Sociologie du travail* (France); of the editorial board of *Voluntas: International Journal of Voluntary and Nonprofit Organizations*, Kluwer Academic - Plenum Publishers (USA); of the redaction committee of *Économie et solidarités*,

2ND EMES INTERNATIONAL PHD SUMMER SCHOOL

journal of the International Center of Research and Information on the Public, Social and Cooperative Economy (CIRIEC), Quebec, Canada.

Jean-Louis Laville is also a member of several expert societies. He is for example a member – representing Europe – of the Board of directors of the International Society for Third Sector Research (ISTR), and a member of the Association Internationale des Sociologues de Langue Française (AISLF), within which he is co-responsible for the Research Committee on "Economic sociology". jean-louis.laville@lise.cnrs.fr



VICTOR PESTOFF received his B.A. in political science from California State University at Long Beach and defended his Ph.D. in political science at Stockholm University in 1977. He taught at Stockholm University for nearly 20 years: six years at the Department of Political Science and 13 years at the School of Business. He became a Research Associate at Helsinki University, Finland in 1988 and was a Research Fellow at Kanazawa University, Japan, in 1998. In the mid-1990s he joined the faculty of the newly opened Södertörns högskola and became a Professor of Political Science. He was appointed Full Professor of Political Science at Mid-Sweden University in Östersund, in 2002 and left there in 2008. He was a member of the Swedish Fulbright Commission between 1995 and 2006. Currently he is a Guest Professor at the Institute for Civil Society Studies at Ersta Sköndal University College in Stockholm. His current research interests focus on citizen participation and co-production of welfare services as well as the (re-) democratization of the welfare state.

He was a member of the TSFEPS research group of the EMES network that undertook the comparative project, the Politics of Family Policy and Social Solidarity. He was also a member of the ESF/EQUAL Partnership to Promote the Social Economy in Stockholm County (www.Slup.se) between 2002 – 2005, where he focused on social accounting and reporting. He is also the co-organizer of the Third Sector Study Group of the European Group for Public Administration, or EGPA. He contributed to the CINEFOGO & EMES 1st International Doctoral Summer School on Corsica in July, 2008.

victor.pestoff@esh.se

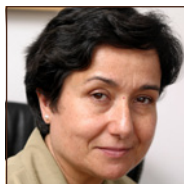


ROGER SPEAR is Chair of the Co-operatives Research Unit, founding member and vice-president of the EMES research network on social enterprise, and teaches organisational systems and research methods in the Centre for Complexity and Change at the Open University. His first degree was from University College London, and he has a Masters degree in Systems from Lancaster University. His research interest for many years has been on innovation and development in the third sector, specifically studying co-operatives and social enterprises. Studies have included: a three year research project on co-operatives in the UK, a six country study of Worker Buyouts in Europe; a study of social co-ops in the UK; a comparative study of employee ownership in Netherlands and UK; a four country study of Social audit in the social economy funded by European Commission (DG23); a study of labour market integration in several European countries; a comparative study of social enterprises in Europe (EMES project Frameworks 4&5: see www.emes.net). He was one of the coordinators of a major CIRIEC project on unemployment and the third system (funded by European Commission). r.g.spear@open.ac.uk

1 JULY–4 JULY 2010, ROSKILDE UNIVERSITY, DENMARK

FACULTY MEMBERS' BIOS

CONTINUED



ISABEL VIDAL is Professor of Economics at the University of Barcelona and President of the Research Center in Economy and Society (CIES). From 1994 Academic Director of the Master in Social Economy and Direction of the non profit organization and from 2003 Academic Director of the Master in Corporate Social Responsibility, Accounting and Social Audit, both of the University of Barcelona. Her latest publications in English include "The role of social enterprises in Europe: a core element or a distraction in the provision of public services?" in S. Osborne (ed.), *The Third Sector in Europe. Prospects and Challenges*, Routledge, 2008 and "Social Economy" in R. Taylor (ed.) in *Third Sector Research*, Springer, 2010.
ividal@grupcies.com

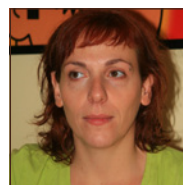
PARTICIPANTS' ROSTER



ANA LUZ ABRAMOVICH, Argentina
THE RELATIONSHIP BETWEEN MAN AND NATURE IN THE CONSTRUCTION OF AN ALTERNATIVE ECONOMY.

I intend to submit for discussion the basic ideas on which the thesis project is being formulated schematically presented on two axes:

- The first refers to research topic : the relationship between man and nature. The purpose of my work is to further this field by integrating elements of SSE and Ecological Economics.
- The second axis deals with the methodology proposal : participatory research tools. It alludes to the fact that those directly affected by the issue discussed are involved in the research. They participate during the various stages that it comprises: from the definition of specific problems, to their proposed research and implementation. analuzabra@gmail.com



SOFIA ADAM, Greece
SOCIAL ECONOMY AS A MEANS TO ADDRESS WORK INTEGRATION OF VULNERABLE SOCIAL GROUPS: THE GREEK EXPERIENCE.

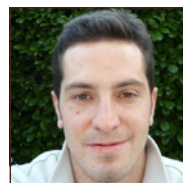
Social economy as science and practice has not been granted significant attention so far in the Greek context. This project attempts to address this knowledge/policy/practice gap by focusing on work integration social enterprises in Greece. Research questions involve the elaboration of a concrete theoretical framework for the approach, the examination of the causes and internal function of social enterprises as well as their potential for sustainable development. The methodology is both quantitative and qualitative. sof_adam77@yahoo.gr



ELIENE GOMES DOS ANJOS, Brazil
PRACTICES AND MEANINGS OF THE SOLIDARY ECONOMY COOPERATIVES.

I investigate a database comprising the 1257 cooperatives registered in the First Nationwide Mapping of Solidary Economy. I seek to characterize such cooperatives and assess to what extent they surpass the wage-earning culture and encourage workers to assume the collective management of those organizations. According to the preliminary analyses, these cooperatives are characterized by democratic practices; however, they face obstacles to their survival that prevent them from offering benefits and social rights to their members.

elieneanjos@yahoo.com.br



GREGORIO AVILÉS, Switzerland
IMPACT EVALUATION OF WORK INTEGRATION SOCIAL ENTERPRISES.

The aim of my thesis project is double:

- To define an adequate evaluation instrument, in order to assess direct impacts of WISE's activity on the disadvantaged workers they employ (focus will be on WISE functioning as springboards to the mainstream labour market);
- To estimate "net" impacts at the individual level.

The study would also like to be a contribution to the debate about collective impacts evaluation of both social enterprises and active labour market policies.

gregorio.aviles@supsi.ch

PARTICIPANTS' ROSTER

CONTINUED



THOMAS BABILA SAMA, Finland
NGOS AND THE IMPLEMENTATION OF ACTIVE LABOUR MARKET POLICIES: THE CASE OF FINLAND AND SWEDEN.

The aim of the research is to find out the role played by NGOs in the implementation of the Active Labour Market Policies (ALMPs) of Finland and Sweden, and also to find out the relationship that these NGOs have with the Government of the two respective countries. The study will be quantitative but qualitative data will also be collected to complement the quantitative data. Two NGOs will be selected in Finland and one in Sweden because the two selected NGOs in Finland are equivalent to the one selected NGO in Sweden in terms of size and employment potentials.

babilasama@yahoo.com



IRENE BENGO, Italy
SOCIAL ENTERPRISES: TOWARD THE DEFINITION OF A SYSTEM FOR MEASURING SOCIAL ENTERPRISES' VALUE.

The actual contribution of SE has not been proved yet, because of the lack of a consistent performance measurement system (PMS). This situation limits the understanding of the actual contribution of SEs to socio-economic development. The thesis aims to investigate how SE results can be measured with respect to their social, environmental and economic impact. The measurement of social value creation for social enterprises requires the consideration of a variety of outcomes for a heterogeneous set of stakeholders. irene.bengo@polimi.it



LUCIE BRANČIKOVA, Czech Republic
THE BASICS OF SOCIAL AUDITING.

The "Handbook of social auditing" is a "by-product" of an international ESF project "Post start-up support in social entrepreneurship" with the outcomes reaching much beyond it regarding the importance of the subject matter and time-wise because it is linked to the core question of the importance and "raison d'être" of social entrepreneurship/entrepreneurs – proving their social added value, proving that entrepreneurship can be an effective tool for social change as well as serving social enterprise managers as a useful internal managerial tool. The research has gradually shifted from purely technical to more "psychological" one regarding the motivation of the methods application as well as development of a specific method suitable for Czech social co-operatives in the future. brancikova@scmvd.cz



CÉCILE DE CALAN, France
THE EXAMPLE OF CAREER CHANGES TO THE SOCIAL ECONOMY.

We are aiming to explore how deliberate job changes to the social economy can be exemplary of a growing expectation for more meaningful careers. After investigating the various representations of this ill-defined sector, we shall study the characteristics of these vocational turns looking at their contribution to shaping the person and to bringing meaning (as a value-based choice and an attempt at a better work-life balance) to their work lives. ceciledecalan@free.fr



SARA CALVO MARTINEZ, Spain
ETHNIC MINORITY GROUPS AND SOCIAL ENTERPRISE: LONDON AND THE 2012 OLYMPIC AND PARALYMPIC GAMES.

Social enterprises have grown significantly in the last few years in the United Kingdom and are at the centre of much academic and political debate. Although many policy makers and practitioners have recognized the contribution of social enterprises within society, there is a concern as to whether social enterprises benefit minority groups, especially ethnic minorities. Moreover, there is limited theoretical understanding and research oriented work on social enterprises within ethnic minority groups. This research aims to address gaps in the knowledge and understanding surrounding ethnic minority social enterprises and their development using of the preparations for the 2012 Olympic and Paralympic Games within London.

s.calvo@mdx.ac.uk



ANNA CIEPIELEWSKA, Poland
THE ROLE OF SOCIAL ENTERPRISES IN FULFILLING THE BASIC FAMILY FUNCTIONS IN POLAND DURING THE TIME OF TRANSITION.
A CASE OF EARLY CHILDHOOD EDUCATION AND CARE SERVICES.

The research project focuses on the role of social enterprises in fulfilling the basic family functions in Poland during the time of transition. I have chosen a case of early childhood education and care services because it is a social of great importance for many issues of social policy, including labour market (due to the role in easing the intensity of structural conflict), education and reducing social inequalities. Such approach explains why childcare is a vital issue for the future of the welfare state. The project starts with the presentation of determinants for the emergence of social enterprises delivering early childhood education and care services during the time of transition. The project also presents the requirements and socio-economic potential of Polish social enterprises in the area of childcare (many of them exist outside official statistics of Polish registers). The presentation includes the methodology of the research project in the field in chosen four voivodeships which is going to be conducted in 2011. The ending part includes an example of a case delivering early childhood education and care services: a social enterprise run by a foundation, existing in a rural area in the East part of a country. aciepielewska@onet.pl



LISA M. DACANAY, Philippines
STRATEGY CONFIGURATIONS IN SOCIAL ENTERPRISES.

The research problematizes on whether there are strategy configurations linked to the success or failure of social enterprises that serve the poor as primary stakeholders.

The research questions are : What types of strategies exist among social enterprises that serve the poor as primary stakeholders? What roles do stakeholders play and what impact do they have in the strategy formation process across these different types ? Under what conditions would these different types of strategies be effective in serving the poor at various stages of the social enterprise life cycle? lisa_isea@yahoo.com

PARTICIPANTS' ROSTER

CONTINUED



MILLÁN DÍAZ FONCEA, Spain
COOPERATIVE SOCIETIES AND COOPERATIVE ENTREPRENEUR:
ANALYSIS OF KEY FACTORS FOR THEIR DEVELOPMENT.

The objective of my thesis Project is to analyze the key factor of emergence of cooperative societies from a regional and dynamic perspective and to study the socio-demographical, psychological and motivational characteristics of cooperative entrepreneurs. This one will be carried out from literature about institutional and financial factors, as well as difficulties of collective decision-making and scarcity of incentives by workers. The empirical analysis is focused in Spain from 1950 to 2008. millan.diaz@urea.unirioja.es



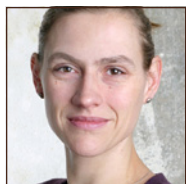
PORTIA DINOSO, USA
SOCIAL CAPITAL THEORY: AN ANALYSIS OF THREE-FILIPINO
AMERICAN COMMUNITIES.

The proposed dissertation will draw upon literature in the field of social capital to explore questions of how Filipino communities build economic and political gains for their communities. More specifically, this dissertation will examine how Filipino-American communities in three cities of Florida (USA) leverage social capital for community gain. Examining the ethnic ties that are inherent in these communities will lead to an exploration of how acculturation, or the socialization of foreign-born citizens into American society, contributes to an environment conducive to civic participation. pmdinoso@aol.com



HYUNGSIK EUM, South Korea (Belgium)
NEW SOCIAL ECONOMY AS A SOCIAL MOVEMENT - COMPARATIVE
ANALYSIS ON THE POLITICAL PROCESS OF INSTITUTIONALIZATION
OF NEW SOCIAL ECONOMY MOVEMENT.

What is new social economy (or solidarity based economy)? What kind of change in modern society does it reflect? By focusing on the political process of institutionalization of new social economy in industrialized countries, I would like to identify new social economy as a social movement organized by citizens in order to tackle social problems not solved by traditional systems. Based on social movement theories, I will use qualitative comparative approach and case study as research method. hseom73@hanmail.net



JENNY ESCHWEILER, Denmark/UK
DELIBERATION, PARTICIPATION, AND THE THIRD SECTOR – MUSLIM
ORGANISATIONS AND INTEGRATION POLICY IN A GERMAN CONTEXT

This is a qualitative study driven by the interest in the importance of public deliberation and the potential of civil society actors to contribute to more representative decision-making. It is looking at paths of political participation of Muslim organisations in Berlin, guided by the assumption that participation in public debate is key to Muslim integration in terms of interest representation. The assumption that involving Muslim communities in public debate is necessary for their political and societal integration is going back to Habermas and his elaborations on deliberation and the critical public sphere. Civil society theory and social movement theory are relevant since Muslim organizations in Berlin are conceptualized as a social movement sector, consisting of institutionalised and grassroots organisations, in-

2ND EMES INTERNATIONAL PHD SUMMER SCHOOL

fluenced by political opportunity structures, but becoming institutionalized itself as it guarantees continuous political input. jennyeschweiler@hotmail.com



MONIKA FAESTER, Denmark
IS USERDRIVEN INNOVATION POSSIBLE IN ESTABLISHED STRUCTURES?
A BOURDIEU INSPIRED ANALYSIS OF A CITY DEVELOPMENT (CARLS-
BERG CITY): THE METAMORPHOSIS OF A CLOSED INDUSTRIAL AREA
TO AN OPEN LIVING AREA

This PhD. projects main focus is to understand how a municipality, a company (Carlsberg Ejendomme) and different NGOs and social entrepreneurs negotiate new ideas concerning social assignments/projects in a city development in Valby. Thereby hoping to answer who benefits from userdriven innovation (by converting social capital into other capitalforms) and who brings the most to the table and why. The main focus is to describe the reasons why some ideas are accepted and others rejected and through that process describing/discussing/problematising the civil sectors role in a modern democracy (citizens rights to develop projects concerning their own lives). monikaf@ruc.dk



BERHANU GEBREMICHAEL, Italy
COFFEE FARMERS' COOPERATIVES AS SOCIAL ENTERPRISES
IN UPHOLDING LIVELIHOOD PORTFOLIOS FOR SUSTAINABILITY
IN ETHIOPIA.

To overcome the diverse socio-economic problems the Ethiopian coffee farmers were facing, they commenced coffee cooperatives ten years ago. It was necessitated since the economic performance and development prospects of Ethiopia are largely dependent on agricultural commodity exports. Coffee has experienced a significant market imbalance and deterioration in the sector and producers' livelihoods. With economic and social objectives, the coffee cooperatives in Ethiopia are both social and economic institutions whose main goal is to bring empowerment and development to their members. The main purpose of this research is, in this regard, to explore the changes that the coffee farmers' cooperatives have brought to uphold farmers' livelihood portfolios and bring about sustainable development in the study areas selected. berhanu24@yahoo.com



ANNA HOLDER, UK
INITIATING ARCHITECTURE: EMERGING ETHICS OF SOCIALLY
ENTREPRENEURIAL DESIGN PRAXIS AND THE ROLE OF THE
DESIGNER IN SOCIALLY MOTIVATED PROJECTS.

My research looks at architectural projects with 'social' or 'public interest' motivations: projects in which the designer aims to influence or serve a wider community, stepping away from a clearly defined role or a standard relationship as a consultant to a client. The project builds on contemporary research on alternative approaches to architectural praxis, focusing on the changing role of the architect, applying knowledge from contemporary planning theory looking at values, power and the individual and collective actions and interactions of practitioners and communities. a.holder@sheffield.ac.uk

1 JULY–4 JULY 2010, ROSKILDE UNIVERSITY, DENMARK

PARTICIPANTS' ROSTER

CONTINUED



TEREZIA HOLUBKOVA, Slovakia
PROFESSIONALIZATION OF NON-PROFIT MANAGEMENT AND THIRD SECTOR RESEARCH IN THE SLOVAK TERTIARY EDUCATION.

Emerging from the state-socialist type of welfare system that defined the structure of the Slovak society for centuries, the young Slovak Third Sector organizations face multiple challenges. There is a fast-changing environment and a necessity of adapting is becoming crucial. The requirements of the fast-changing environment are not reached. In addition to the problems pertaining to the Slovak third sector in general, several studies show, that people working in NGOs miss general management skills and are not well prepared to deal with those challenges.

tereazia@yahoo.com



GRACE (CHANG-YU) HUANG, Taiwan
A SOCIAL EMERGENCE PERSPECTIVE ON SOCIAL ENTREPRENEURSHIP IN TAIWAN.

The rationale of research is to use social emergence concept on social entrepreneurship. I will connect multiple levels of analysis to demonstrate the emergence of social entrepreneurship, that is, social structure, emergents, interactions and individuals. The methodology includes: first, to trace the social structure of Taiwan via institution analysis. Second, I hope to capture the entrepreneurial mobility from entrepreneurial process via interviews, narrative analysis and participate observation.

chuangyu1974@gmail.com



LIONEL HURDEBISE, Belgium
AGENCY THEORY AND ITS LIMITS TO UNDERSTAND THE ROLES OF NONPROFIT BOARDS OF DIRECTORS.

Agency theory and its applicability in the nonprofit sector lead us to express three limitations: 1. The notion of principal is close to the concept of ownership in for-profit organizations. It must then be carefully used in the context of nonprofit organizations. 2. While for-profit boards can play a supporting role for managers, it seems to be more the rule than the exception in the nonprofit sector; 3. Agency relationship seems to evolve with the different stages of organizational life. l.hurdebise@ulg.ac.be



MARIA ISABEL IRURITA, UK
SOCIAL ENTERPRISES IN THE UK: SUPPLYING OR DEMANDING INNOVATION?

This research looks at the role that networks, collaborations and trust play in fostering innovation between social enterprises in the UK. m.irurita@mdx.ac.uk



AMY, FENG-CHING KANG, TAIWAN
SOCIAL ENTERPRISES IN TAIWAN: STRATEGIES, PARTNERSHIPS AND CHALLENGES.

The aim of this study is to know the features and collaborated models of social enterprises under the different organizational forms and institutional environment in Taiwan. I will develop my research with reference to institutional theory and resource-based theory, about their responses to changes in their environments by devising semi-structural questionnaire and in-depth interview. amykang0619@gmail.com

2ND EMES INTERNATIONAL PHD SUMMER SCHOOL



TARA KORTI, India
CONTRIBUTIONS OF SUPPORT FUNCTIONS TO THE PROCESS OF EMPOWERMENT: AN EXPLORATION INTO THE REACH OF AGENCY OF SUPPORT NGOS.

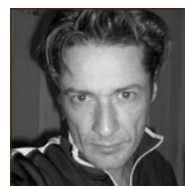
Understanding the nature of work and role of Support NGOs is challenging because of the complexity in their functioning. These organizations are located at the centre of several constituencies-local groups whom they support; the governments; donors that fund their activities; national bodies and international institutions. These organizations are at the same time local actors and global actors depending on the nature of their issue involvement at a particular point in time. Support NGOs may or may not work at the grassroots level but often they articulate their goals in terms of transformation and change. Hence it becomes necessary to focus upon them. Overall this research attempts to unravel the social and development role played by Support NGOs and place the consequences of their interventions in a larger social and political context. This study will be intensive and detailed of three Support NGOs working in India. tara.korti@gmail.com



HARRI KOSTILAINEN, Finland
SOCIAL ENTERPRISES IN THE CONTEXT OF RENEWAL OF WELFARE STATE.

Dissertation will be divided in to four independent articles and one summary chapter. A problem statement is to find out what is position of social enterprises in renewal of Finnish welfare state during the last decade. I am analyzing social enterprises answering following research questions:

1. What kind of social innovation(s) have European social fund programmes diffused in to Finland in the context of social enterprises and social entrepreneurship during the last decade? (Article 1. working title: social innovations for labor market)
2. What kind of social enterprise models have been developed in the European Union countries in the 2000's? (Article 2. working title: Social enterprise models in European Union)
3. What factors explain the diffusion of social enterprises in the context of social innovation? (Article 3. working title: Diffusion of social enterprises in Finland)
4. What are the key successes factors explaining economically viable and socially sustainable conditions for employment? (Article 4. working title: Social enterprises as an investment). harri.kostilainen@diak.fi



PER KRULL, Denmark
HOW DO SOCIAL ENTERPRISES ORGANIZE FOR SOCIAL PURPOSED BUSINESSES – FOCUSING ON BUSINESS MODELS AND STRATEGIC PARTNERSHIPS MODELS?

The phd-research project investigates how social enterprises do organize for social purposed businesses the project is build upon two basic empirical case studies. One among 15 social entrepreneurs. From the kaospilots, denmark; the other casestudy is among social enterprises that have succeed with growth and value creation at a higher level. The casestudy as well addresses topics like businessmodels, partnerships, growth and strategy, and how open innovation can lead to value creation and competitive advantage. krull@kaospilot.dk

1 JULY–4 JULY 2010, ROSKILDE UNIVERSITY, DENMARK

PARTICIPANTS' ROSTER

CONTINUED



ANAËL LABIGNE (Germany)

THE ROLE OF "CIVILITY" IN CIVIL SOCIETY. AN EMPIRICAL INVESTIGATION OF THE NORMATIVE DIMENSION.

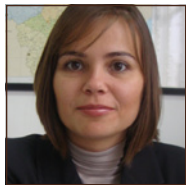
My dissertation is about the sociologically neglected concept of "civility" and its meaning for modern societies. The key task in the first part of my research is to identify relevant theory frames to develop a sociological understanding of civility and its relation to social order. The second part questions a vague conception of so called "civil society organizations" and proposes to study the degree of civility and incivility within and between non-state, non-market organizations. The research objective is to empirically identify necessary conditions for civility and civil organizational behavior. In doing so, the fact that organizations are not anonymous entities, but actors embedded in macrostructures, consisting of real persons, is not ignored. labigne@transnationalstudies.eu



MICHAELA LEDNOVA, Slovakia

APPLICATION OF RESEARCH AND KNOWLEDGE MANAGEMENT PROCESS IN THE DESIGN OF PROGRAMMES AND FORMULATION OF POLICIES : EXPERIENCE IN THE CONTEXT OF SOCIAL ENTERPRISE-RELATED DEVELOPMENT WORK OF UNDP IN EUROPE AND THE CIS.

UNDP as a global knowledge management network puts considerable emphasis on capturing and maximizing the wide-spread knowledge that exist both within and outside of the organization. Accordingly, research, knowledge and experience provide bridge between development work of UNDP and its project and policy responses. This has been also fully applied in the case of UNDP's work on social enterprise development in the region of Europe and the CIS. Recently, the focus has been to produce concrete data through applied and innovative research, extended in-depth interaction and shared practice both within organization and with various actors (interactive dialogue between civil society, governments and international organizations). This means that UNDP has to successfully manage integration of the research, application of lessons learned and replication of best practices effectively into its policies, programmes and projects. michaela.lednova@undp.org



BIANCA LIMA COSTA, Brazil

THE CRISIS OF LABOUR AND NEW WAYS OF GENERATING WORK AND INCOME: PUBLIC POLICIES OF SOLIDARITY ECONOMY.

The project aims to analyze the public policies of Labour, Employment and Income conducted by the State of Minas Gerais in Brazil, mainly under the focus of Solidarity Economy. I seek to understand how such policies are implemented, its objectives and results. In the Brazilian marked context of social inequality and poverty, I analyze whether and how the encouragement public policies of solidarity enterprises may represent changes. bianca.costa@social.mg.gov.br



ELINE SYNNEVA LORENTZEN INGSTAD, Norway

SOCIAL ENTREPRENEURSHIP: THE PROMISES AND CHALLENGES OF SOCIAL ENTREPRENEURSHIP IN THE CONTEXT OF A WELFARE STATE.

The project is about social entrepreneurship in the context of a modern welfare society as Norway. It seeks to explore if and how social entrepreneurship can

2ND EMES INTERNATIONAL PHD SUMMER SCHOOL

provide new solutions to the problems in the welfare state. While the more specific research questions addresses the challenges of scaling up and measuring social impact, the overall aim is to develop knowledge about the promises and challenges of social entrepreneurship in a welfare society. e.s.lingstad@sfe.uio.no



LT. COL. VLADIMIR T. MATA, Philippine

TOWARD INCLUSIVE SOCIETY: SMALL CAPITAL FOR LIFE-CHANGING IMPACTS AND PROSPECT OF SUSTAINABLE INNOVATIONS: SOLIDARITY ECONOMY-BASED ENTERPRISES PROMOTING LOCAL DEVELOPMENT: CASE OF PHILIPPINE AND CHINA.

Solidarity economy-based solutions have recently emerged via the establishment of social enterprises and microfinance schemes to diffuse capital in an end view of generating wealth among the poor, hence, address the problem of poverty, access to health care, better education and shelter. The birth of these social enterprises has become more relevant and urgent in countries like the Philippines and China, where access to formal capital markets are rather prohibitive and rigid. This dissertation paper hopes to examine the deeper roles played by social economy-based enterprises as brand new values and formation of new civil society culture emerge, specifically in the area of financing to attain a civic objective resulting to nation-building. vladimir_mata@yahoo.com



GEMMA MCKENNA, UK

SOCIAL ENTERPRISE AND EMPLOYMENT OPPORTUNITIES FOR HOMELESS.

The research concerns social enterprises and employment opportunities for homeless people. Although there is academic research on the link between unemployment and homelessness there is insufficient theoretical and empirical evidence linking social enterprise and work opportunities particularly for those experiencing deep exclusion. The research addresses these issues using qualitative tools to uncover successful models of social enterprise and if they help those furthest from the labour market. g.mckenna@mdx.ac.uk



HANNA MOILANEN, Finland

SMALL CO-OPERATIVES AS PROVIDERS FOR SELF EMPLOYMENT IN FINLAND SINCE 1990'S.

My thesis deals with worker co-operatives and employment in Finland since 1990's. I study worker co-operatives and work integrating co-operatives as a self-employment strategy in social context which is characterized by fragmental careers, risk of unemployment and precariousness. My research is founded on theoretical discussion of the relationship between economical pursuit and social pursuit. On empiric level I apply both statistical analysis and qualitative methods. hanna.moilanen@gmail.com



JULIE RIJPENS, Belgium

THE GOVERNANCE OF SOCIAL ENTERPRISES: EXPLORING THE COMPOSITION AND THE ROLES OF BOARDS THROUGH THE LENS OF LEGITIMACY.

My research project is dealing with the governance in social enterprises, in par-

1 JULY-4 JULY 2010, ROSKILDE UNIVERSITY, DENMARK

PARTICIPANTS' ROSTER

CONTINUED

ticular with the boards as anchorage point of decision-making modes. It draws on a twofold observation: (1) the roles assumed by the board in a social enterprise vary from one enterprise to another and evolve over time; (2) the question of board composition, and especially that of the implication of stakeholders in governing bodies, finds different answers in different enterprises. Drawing on these observations, the present research is interested in the contextual factors influencing these two dimensions; it asks the question of the legitimacy of decision-making processes. In order to go beyond the prescriptive or descriptive nature of literature on governance in social enterprises, the hypotheses will be explored through a qualitative approach. The methodology implemented will draw on four case studies on mature social enterprises pursuing a work integration purpose.

julie.rijpens@ulg.ac.be



HOLLY A RITCHIE, UK
INSTITUTIONAL CONSTRUCTION IN VALUE CHAIN CREATION:
SHAPING ECONOMIC DEVELOPMENT IN AFGHANISTAN.

The research focuses on the remoulding of local institutions in enterprise development in Afghanistan. Despite the on-going conflict, 'entrepreneurial activity is ubiquitous'. Yet studies suggest that entrepreneurship may not always generate economic growth and development. This research will examine the underlying process of (social/cultural) institutional change in enterprise, and the implications for broader economic and social development. Practical case studies build off six years of field experience. hollyaritchie@yahoo.co.uk



ESTEBAN ALONSO RIVERA HERNANDEZ, Mexico
CONTRIBUTION OF SOCIAL ECONOMY TO THE LOCAL DEVELOPMENT
IN MEXICO.

This research aims to show, theoretically and empirically, the relevance of the Social Economy as a system for local development, or even further in the construction of a real welfare state in Mexico. I will describe, firstly, some basic features which characterize local development as a restructuring factor like economic, environmental, social and institutional sustainability; and secondly, some general aspects of the Social Economy in Mexico, including some case studies of cooperatives that help to increase the competitiveness and attractiveness of some provinces and improve the quality of life in these areas. Finally, I will analyze the role of the Social Economy as an "endogenous resource" in territorial development, through the recognition of the links and synergies among job generation, human capital and cooperative behavior in local/rural development. erivera@shf.gob.mx

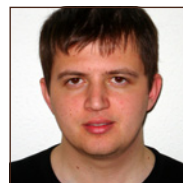


CHARLOTTE ROSENBERG, Denmark
SOCIAL ENTREPRENEURSHIP, INNOVATIVE METHODS AND
COMMUNITY DEVELOPMENT.

This thesis aims to contribute to develop the field for some of the Danish society's most vulnerable citizens. It will examine an organization more closely because it is one of the organizations in the Danish welfare field which all the time struggles for justification despite the fact that the organization addresses a formulated need. The purpose is to get more knowledge based on empirical work about the role the civil society plays in the development of the Danish welfare state seen from a social entrepreneurship perspective. I will analyze the civil society organizations to the extent

2ND EMES INTERNATIONAL PHD SUMMER SCHOOL

that they possess some features which the public and private sector do not. What do these features imply? What happens when the public sector tries to standardize the organizations in the third sector so they can fit in to the standards of organizations in the public sector? My project will have an institutional view on SydhavnsCompagniet (Sydhavn is a Copenhagen neighbourhood) as an organization. charlotr@ruc.dk



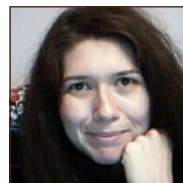
ROMEO SHARRA, Belgium
SOCIAL ECONOMY IN THE BRUSSELS REGION: ANALYSIS OF ORGANIZA-
TIONAL AND INSTITUTIONAL DETERMINANTS OF SOCIAL INNOVATION.

Our thesis research project consists in analyzing the organizational and institutional determinants of social innovation in the Brussels region. Our assumption is that these determinants are above all endogenous to the social economy organizations. We insist on the importance of the involvement of multiple stakeholders and the availability of critical resources. However, the role played by public and/or private institutions external to socially innovative organizations should not be neglected. rsharra@gmail.com



ASAF STEIN, Israel
FROM HIGH-TECH CULTURE TO VENTURE PHILANTHROPY:
A CASE STUDY IN THE MENTORING OF SOCIAL ENTREPRENEURSHIP.

One of the salient organizational models that demonstrate the putting to use of ideas from the high-tech into social practices is the 'Venture Philanthropy' foundations model. I intend to examine a case of one Israeli venture philanthropy foundation that implements a program for social entrepreneurs. Through a qualitative-ethnographic study I shall look at the relationships between the fellows (coming from the social world) and their mentors (from the high-tech industry). steinasa@gmail.com



BIANCA STUMBITZ, United Kingdom
OLDER SOCIAL ENTREPRENEURS.

The aim of this study is to explore and explain the role, experiences and potential of older people in social entrepreneurship activity in the UK, and to examine their particular support needs. b.stumbitz@mdx.ac.uk



PIERRE GERMAIN UMUHIRE
ANALYZING THE COEXISTENCE OF INFORMAL FINANCE AND
INSTITUTIONAL MICROFINANCE IN THE CONTEXT OF URBAN
AFRICAN FINANCIAL MARKETS.

My thesis is dedicated to the analysis of financial practices of low income individuals. It particularly focuses on the study of the so-called informal financial and institutional microfinance which are pervasive in the financial markets of most of the developing countries. Its main objective is to enquire about the rationale and the forms under which institutional and informal microfinance coexist and/or compete. This objective is all the more relevant as the relationship of the informal and institutional microfinance has remained for long time restricted to that of a potential substitutability of informal by institutional microfinance.

pierre.umuhire@student.uclouvain.be

1 JULY–4 JULY 2010, ROSKILDE UNIVERSITY, DENMARK

PARTICIPANTS' ROSTER

CONTINUED



GONZALO VAZQUEZ, Argentina

THE SUSTAINABILITY OF SELF-MANAGED WORKERS' ENTERPRISES.

The objective of this thesis is to develop a conceptual basis about self-managed workers' enterprises and rethink their conditions for sustainability. We adopt a substantive perspective of the economy with a plurality of principles, and we recover the linking of these experiences with the Popular Economy and the economic strategies of the households. We analyse the conceptualization of associative and self-managed work and their potential for development of alternative economic forms.
poblacionmilagro@gmail.com



ITZIAR VILLAFÁÑEZ PEREZ, Spain

THE POSITION OF THE PARTNERS OF THE COOPERATIVE IN CASE OF INSOLVENCY.

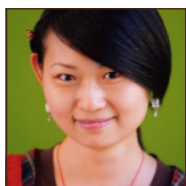
Taking as a base the analysis of the relationship of the partners with the coop, their liability, their rights and duties, the financial structure of these societies, etc., I study the way an Insolvency Proceeding of a coop have influence on these aspects, detecting the existing problems and gaps and proposing solutions. The base of the thesis are Basque coops and their regulation, though I expect to do thesis are Basque coops and their regulation, though I expect to do comparative analyses and to include the European Cooperative Society. itziar.villafanez@ehu.es



ANICA ZEYEN, Germany

SCALING OF SOCIAL ENTREPRENEURSHIP - INVESTIGATING MEANS OF GROWTH OPTIMIZATION.

In my paper-based thesis, I am exploring the question of scaling and growth of social entrepreneurship organizations, respectively. Individual papers emphasize the various aspects influencing growth. These include internal factors such as drivers of success and leadership as well as external ones e.g. institutional environment, and cultural differences. These research questions are addressed by, in the majority, using explorative qualitative research through conducting expert interviews.
haehnel@leuphana.de



LI ZHAO, China

NEW CO-OPERATIVE DEVELOPMENT IN CHINA: THEORETICAL LEGITIMATIONS AND PRACTICAL IMPLICATIONS

Previous research demonstrates that the co-operative field in China is highly innovative and creates room for a mild form of liberalization. This is especially the case in rural China where since the 1980s shareholding co-operatives have been established at a very rapid pace. With the dismantling of the People's Communes the shareholding co-operative system (SHCS) was invented as an experiment in the reform of property rights and management systems and as a response to the problems created by the dismantling of collective properties. This research focuses on the dynamics of the new co-operative development in China, and will be divided into four parts, namely (1) Determinants of new co-operative development in China; (2) Shareholder participation in co-operative capital in China; (3) Shareholder participation in co-operative governance in China; (4) New co-operative responses to social and economic challenges. li.zhao@hiva.kuleuven.be

2ND EMES INTERNATIONAL PHD SUMMER SCHOOL

ABOUT THE ORGANIZERS

The EMES European Research Network asbl (EMES) is a network of research centers with a long track record. It is considered as the leading European network on social economy and social enterprise. EMES has a strong global position and cooperates with centers of excellence in Asia, North America, Latin America and Africa. Its goal is threefold:

- to build a European corpus of theoretical and empirical knowledge around social enterprise, social entrepreneurship, social economy, solidarity economy, social innovation, and the third sector;
- to provide critical evidence for the evolution of an integrated Europe with a significant impact of social enterprise and active citizenship;
- to position EMES globally and increase the cooperation with centers of excellence on all continents.

Contact information

President: Prof. Lars Hulgård, Roskilde University (Denmark), hulg@ruc.dk
Former President (2002-2010): Prof. Jacques Defourny, University of Liege (Belgium), j.defourny@ulg.ac.be
Director of coordination: Rocío Nogales, info@emes.net

More info at: www.emes.net

The CENTRE FOR SOCIAL ENTREPRENEURSHIP (Center for Socialt Entreprenørskab or CSE) was founded in 2007 and is based in the Department Psychology and Educational Studies at Roskilde University (Denmark). The Centre carries out education and research activities in the area of social entrepreneurship, social enterprise, welfare studies and civil society. It has pioneered Europe's first Masters in Social Entrepreneurship with 25 mature students from the public and third sector. Its international team of academics supports the two year part-time program of studies. CSE conducts contract research, most recently on welfare to work policies in Denmark, and includes an extensive research program for doctoral students.

Contact information

Director: Linda L. Andersen, lila@ruc.dk
Operations manager: Lise Bisballe, liseb@ruc.dk

More info at: www.ruc.dk/paes_en/cse

NOTES

2ND EMES INTERNATIONAL PHD SUMMER SCHOOL

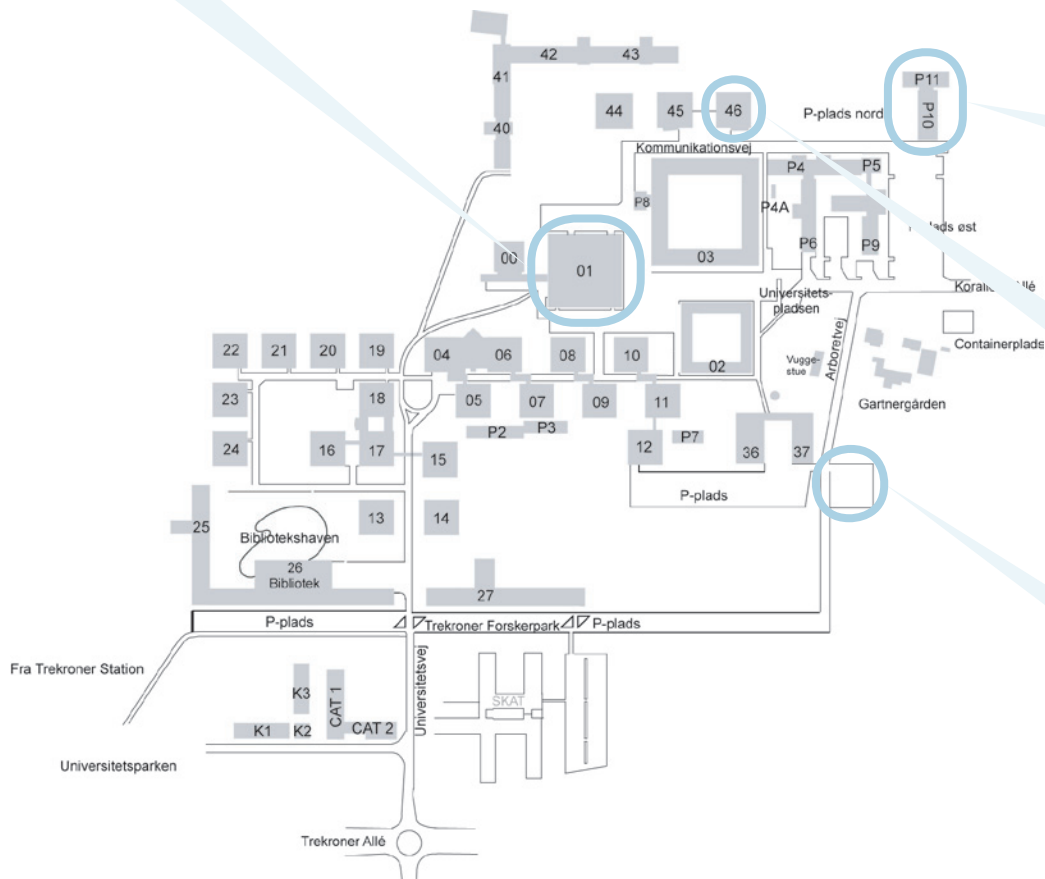
1 JULY–4 JULY 2010, ROSKILDE UNIVERSITY, DENMARK

MAP AND EVENT LOCATIONS

DINING SERVICES AND DINING HALL

BOOKSTORE

ATM



TREKRONER STATION

PAVILIONS 10 & 11 (P10 & P11)

CENTER FOR SOCIAL ENTREPRENEURSHIP (CSE)

EVENING DINNERS ARE HOSTED BY CSE IN P11

LUNCH (DURING THE WEEKEND)

BUILDING 46

CONFERENCE REGISTRATION/FRONT DESK
THURSDAY, JULY 1, 14:00–15:00/2–3PM

AUDITORIUM

GROUP ROOMS

KORALLEN (THE CHORAL)

ACCOMMODATION FOR STUDENT DELEGATES

ABOUT THE EMES PHD INTERNATIONAL SUMMER SCHOOLS

The idea of an EMES PhD International Summer School aims to complete and widen the offer available to future scholars by providing them important analytical frameworks. The goal is to strengthen the training of graduate students by means of in-depth and varied theoretical lectures, debates, workshops and presentations by the students themselves.

In a similar vein, numerous PhD and Masters theses on topics related to the extensive field referred to as the “third sector” are currently being prepared, both in traditional university schools - such as political science, sociology, economics, anthropology, etc. - and in business schools. Regardless of the approach used – non-profit studies, social economy, solidarity-based economy, social enterprise, etc. – the academic recognition of this field is being mirrored by the existence or creation of a number of specialized university programs and research centers that attract an increasing number of young researchers.

Nevertheless, specific doctoral training programs for young scholars in the third sector, addressing theoretical and hands-on research issues, do not abound, and the existing programs favor either a socio-political or a non-profit perspective.

From a content standpoint, the specificity of EMES PhD summer schools lays in:

- an innovative cross-analysis of the major theoretical trends in the field (social economy and solidarity-based economy, and NPO theories), with an eye on providing new analytical tools to undertake research in the sector;
- the solid and pioneering experience of the professors involved in the field of research related to social enterprise and social entrepreneurship, with an eye on creating a dialogue with other conceptions.

The 1st EMES PhD Summer School was organized in collaboration with the University of Corsica (France) in July 2008. The event gathered thirty-seven PhD students from 21 countries and ten faculty members.

